

---

# Как перестать бояться и начать решать ConvAI.io

Валентин Малых, МФТИ

[valentin.malykh@phystech.edu](mailto:valentin.malykh@phystech.edu)

---

---

# План

1. Что такое диалоговые системы и зачем они нужны
  2. Conversational Intelligence Challenge
  3. Baseline: техническая часть
  4. Baseline: научная часть
-

---

# Что такое диалоговые системы

1



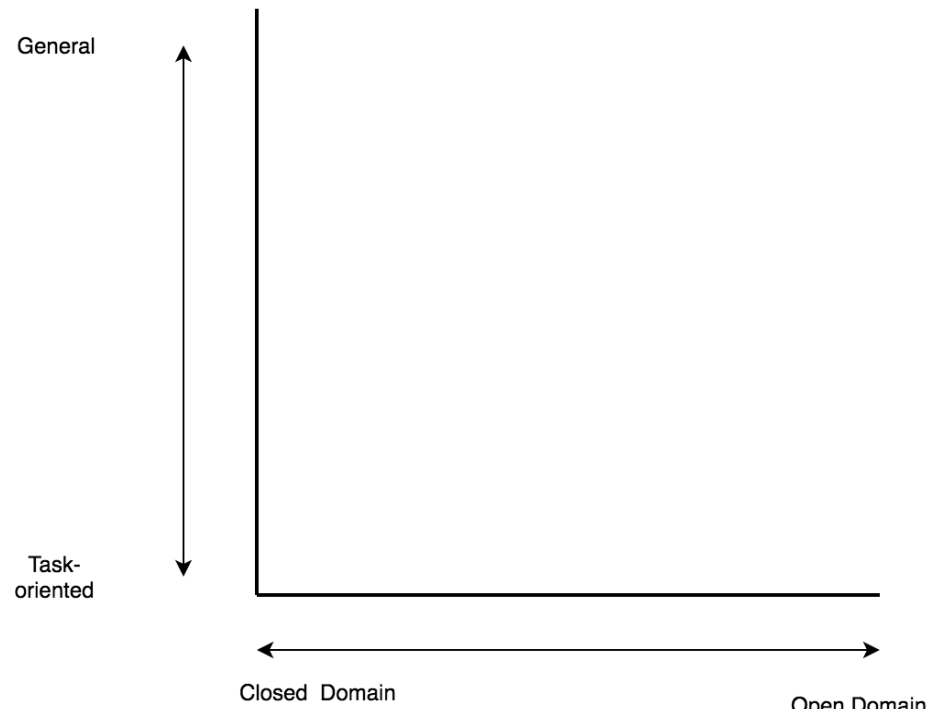
Hey Cortana



1

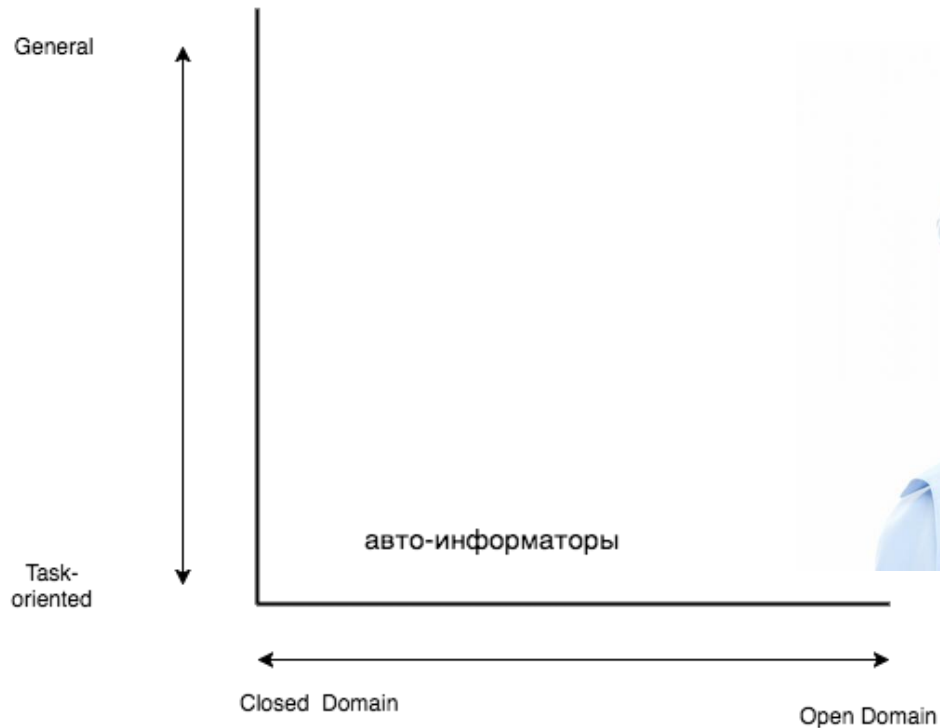
---

# Что такое диалоговые системы



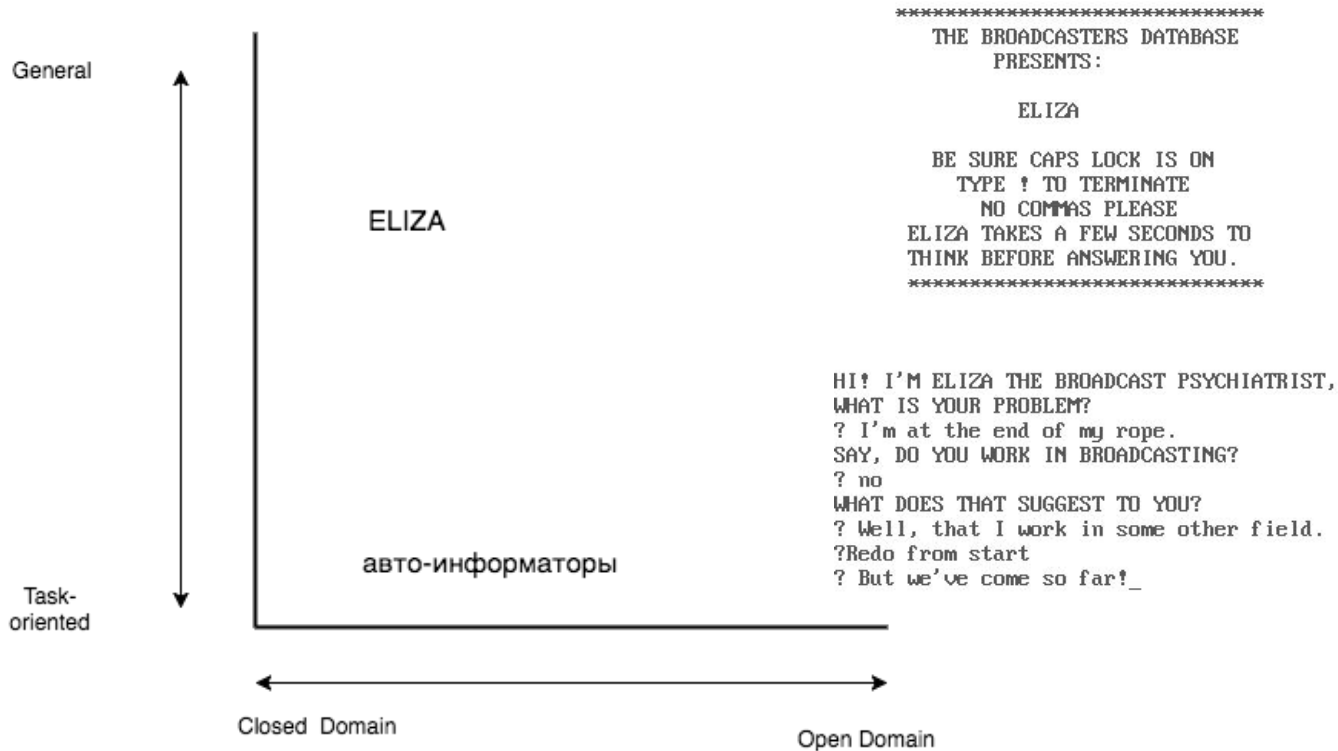
1

# Что такое диалоговые системы



# 1

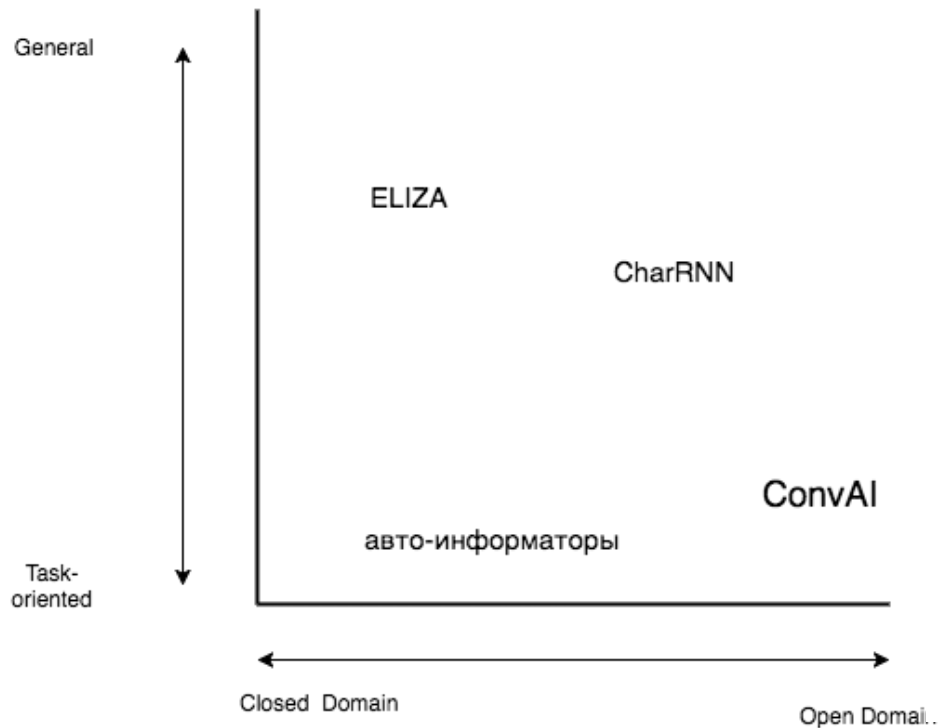
## Что такое диалоговые системы





1

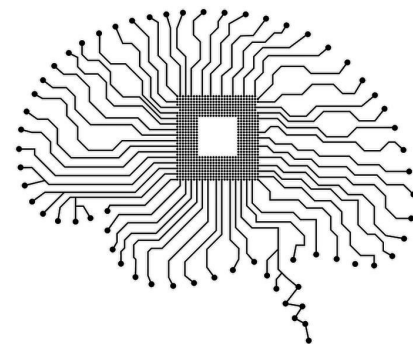
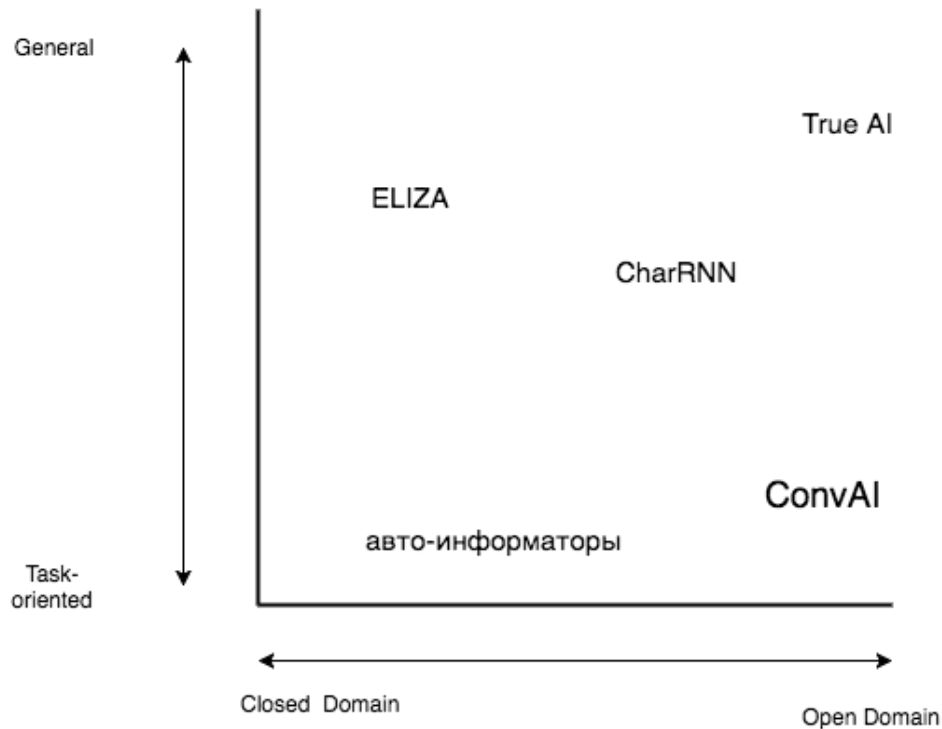
# Что такое диалоговые системы





# 1

## Что такое диалоговые системы



---

# 2

---

## Conversational Intelligence Challenge

- Task-oriented
- General



DA  
[convai.io](https://convai.io)

---

---

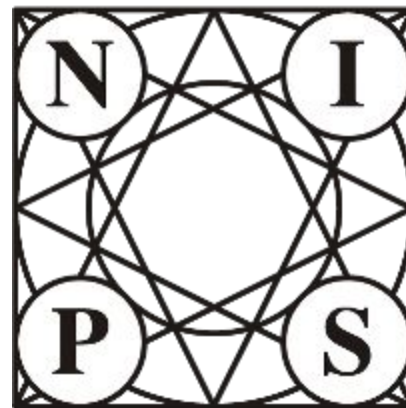
# 2

---

## Conversational Intelligence Challenge

- Task-oriented
- General

NIPS 2017 Live Competition



[convai.io](http://convai.io)

---

---

# 2

---

## Conversational Intelligence Challenge

- Task-oriented
- General

Человек общается с ботом (или не с ботом)

[convai.io](https://convai.io)

---

---

# 2

---

## Conversational Intelligence Challenge

- Task-oriented
- General

Человек общается с ботом (или не с ботом)

Они обсуждают новостную статью

[convai.io](https://convai.io)

---

---

# 2

---

## Conversational Intelligence Challenge

- Task-oriented
- General

Человек общается с ботом (или не с ботом)

Они обсуждают новостную статью

Потом ставят оценки

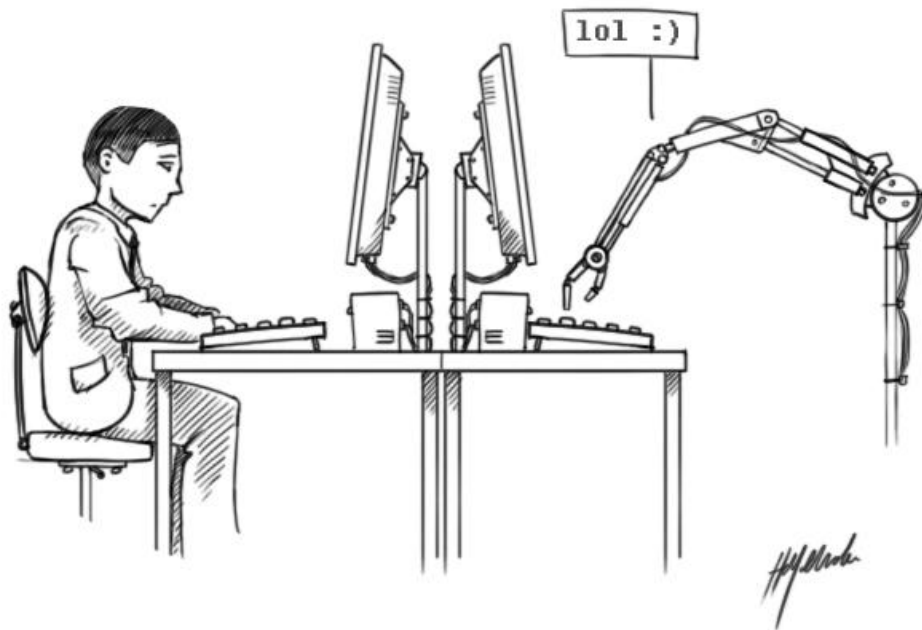
[convai.io](https://convai.io)

---

---

2

# Turing Test



---

---

# Baseline



<https://github.com/MIPTDeepLearningLab/ConvAI-baseline>

---



---

# 3

---

## Baseline: техническая часть

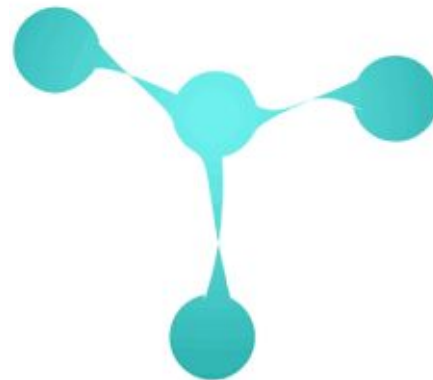
- Docker
  - Python 3
  - Tensorflow
  - Torch
  - Shell
  - Regex
  - Git
-

# 3

---

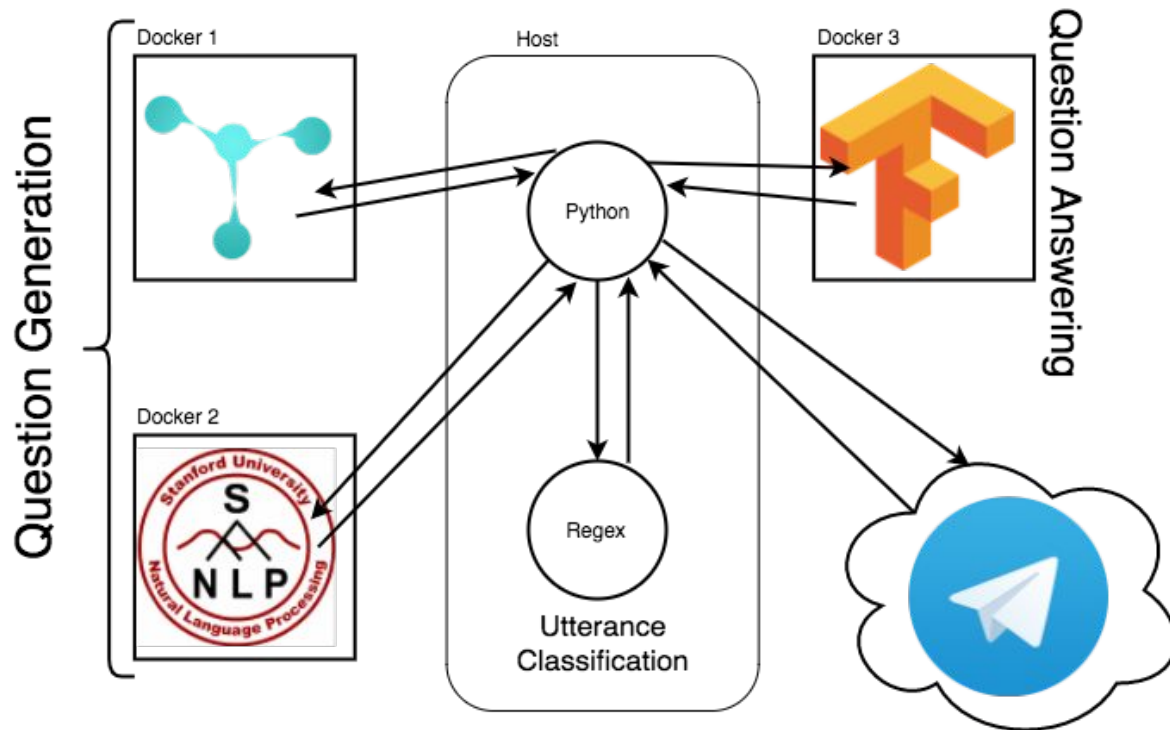
## Baseline: техническая часть

- Docker
- Python 3
- **Tensorflow**
- **Torch**
- Shell
- Regex
- Git



# 3

## Baseline: техническая часть



---

# 4

---

## Baseline: научная часть

- Question Generation
    - **Neural Question Generation from Text: A Preliminary Study**
    - <https://arxiv.org/abs/1704.01792>
  
  - Question Answering
    - **Bidirectional Attention Flow for Machine Comprehension**
    - <https://arxiv.org/abs/1611.01603>
-

---

# 4

---

## Dataset: Description

SQuAD

Stanford Question Answering Dataset

- 500+ Wikipedia articles
  - crowdsourced questions
  - answers are spans
  - 100k+ question-answer pairs
-

---

# 4

---

## Dataset: Example

Architecturally, the school has a Catholic character. Atop the Main Building's gold dome is a golden statue of the Virgin Mary. Immediately in front of the Main Building and facing it, is a copper statue of Christ with arms upraised with the legend "Venite Ad Me Omnes". Next to the Main Building is the Basilica of the Sacred Heart. Immediately behind the basilica is the Grotto, a Marian place of prayer and reflection. It is a replica of the grotto at Lourdes, France where the Virgin Mary reputedly appeared to Saint Bernadette Soubirous in 1858. At the end of the main drive (and in a direct line that connects through 3 statues and the Gold Dome), is a simple, modern stone statue of Mary.

To whom did the Virgin Mary allegedly appear in 1858 in Lourdes France?

Saint Bernadette Soubirous

---

---

# 4

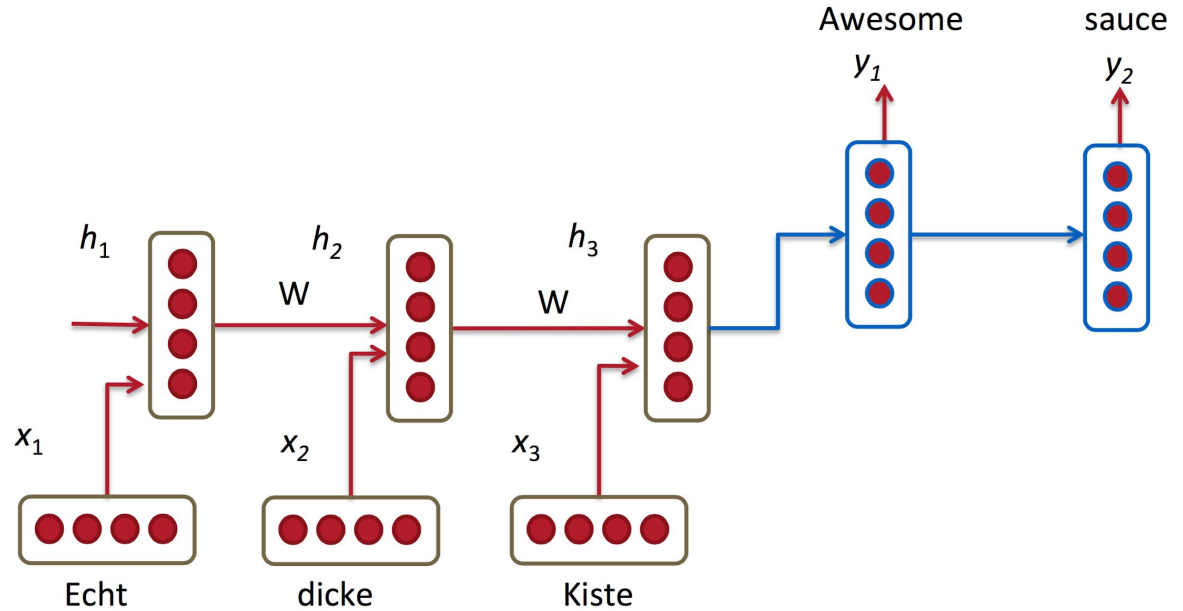
---

## Neural Question Generation from Text: A Preliminary Study

- Пытаемся научиться генерировать вопросы, как в SQuAD
  - Encoder-Decoder architecture
  - Answer position feature (BIO markup)
  - Lexical Features - NER, PoS-tagging
  - Attention-based Decoder
-

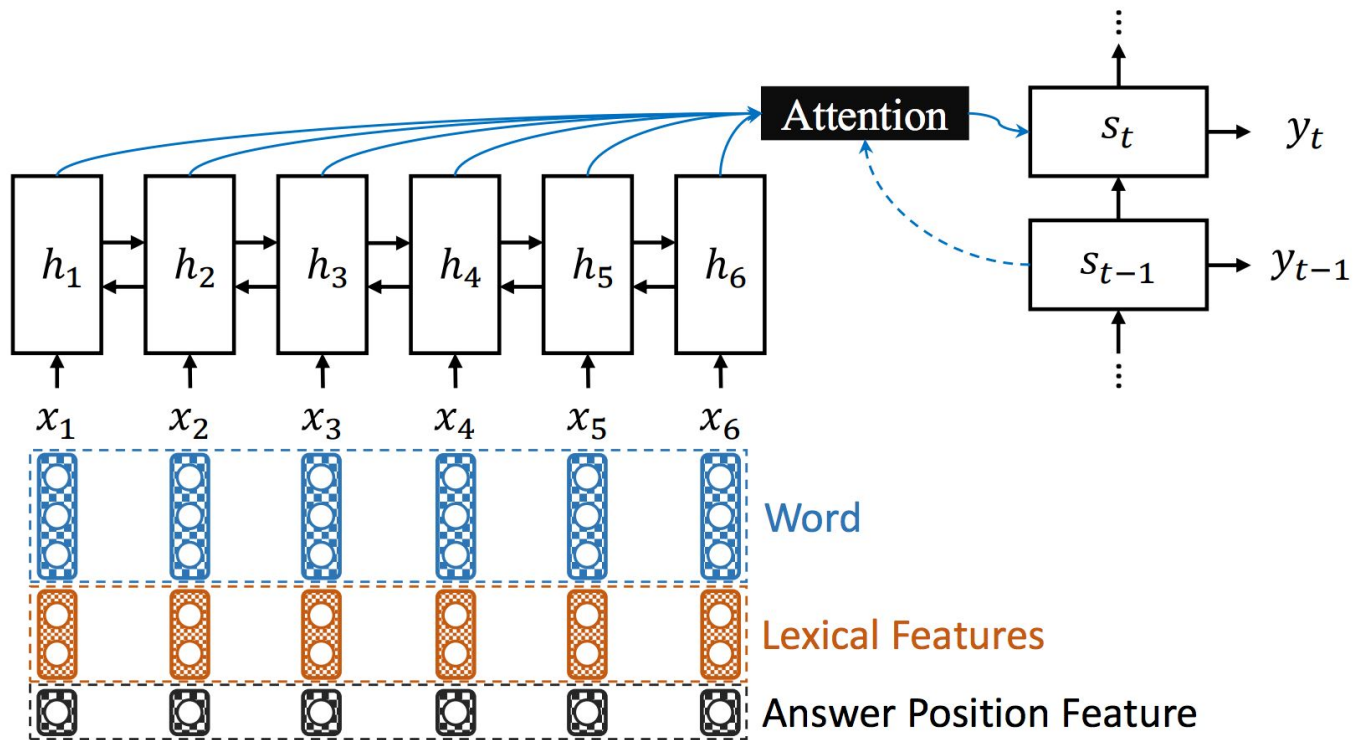
# 4

## Encoder-Decoder





# 4



---

# 4

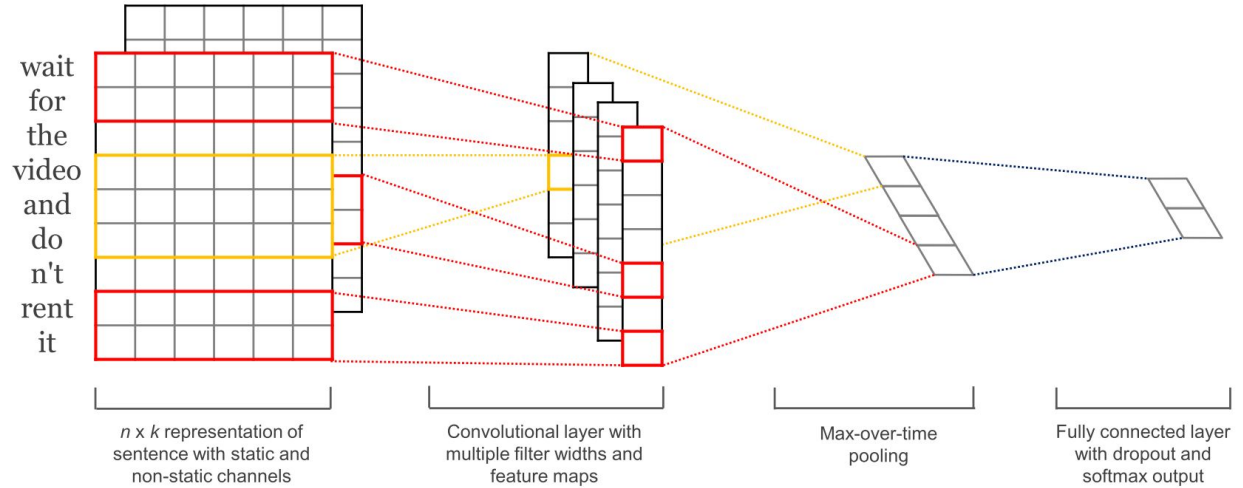
---

## Bidirectional Attention Flow for Machine Comprehension

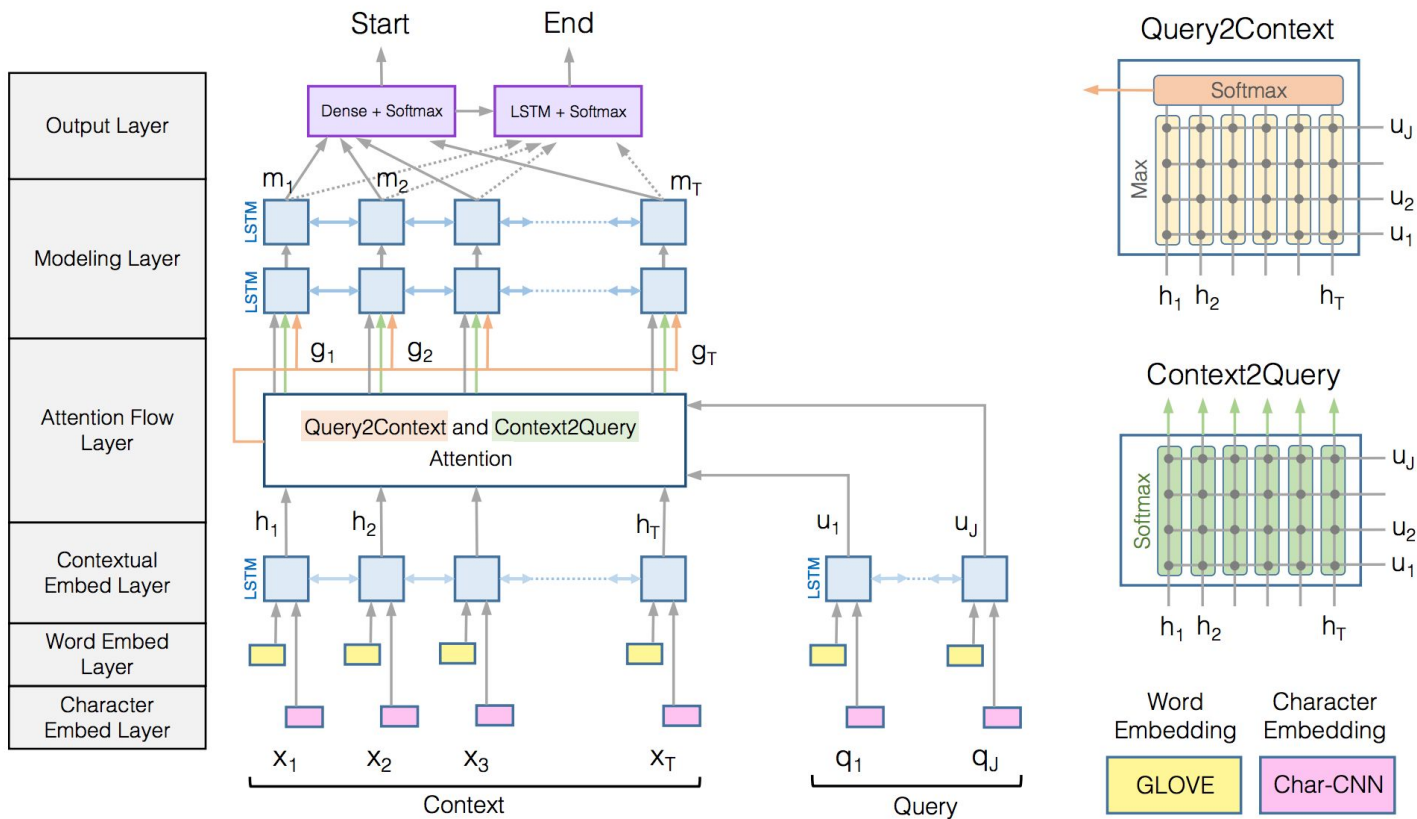
- Генерируем ответы в виде span на основе текста и вопроса к нему
  - Character & Word Embedding
  - Context Embedding
  - Attention Flow
  - Modelling Layer
-

# 4

## Character Embedding

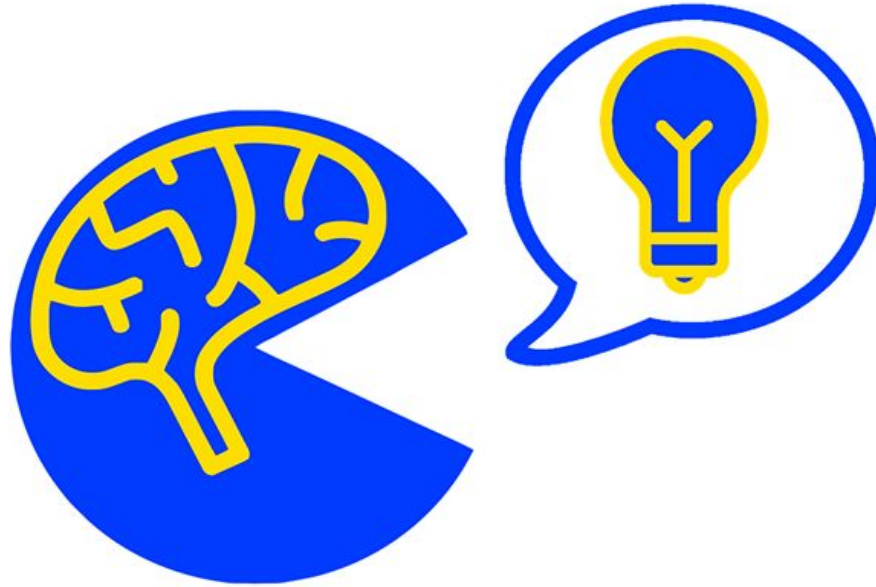


# 4



---

**Спасибо за внимание!**



---

# 1

---

## Что такое диалоговые системы (2)

- State Tracker
  - Natural Language Understanding
  - Natural Language Generation
-

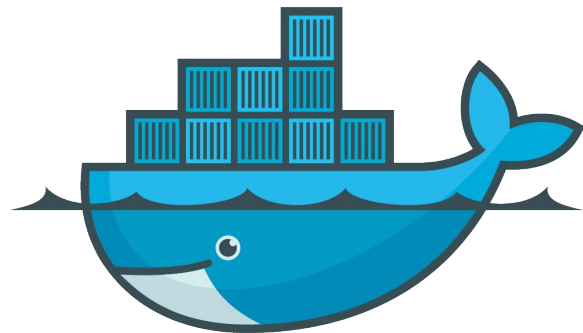
---

# 3

---

## Baseline: техническая часть

- Docker
- Python 3
- Tensorflow
- Torch
- Shell
- Regex
- Git

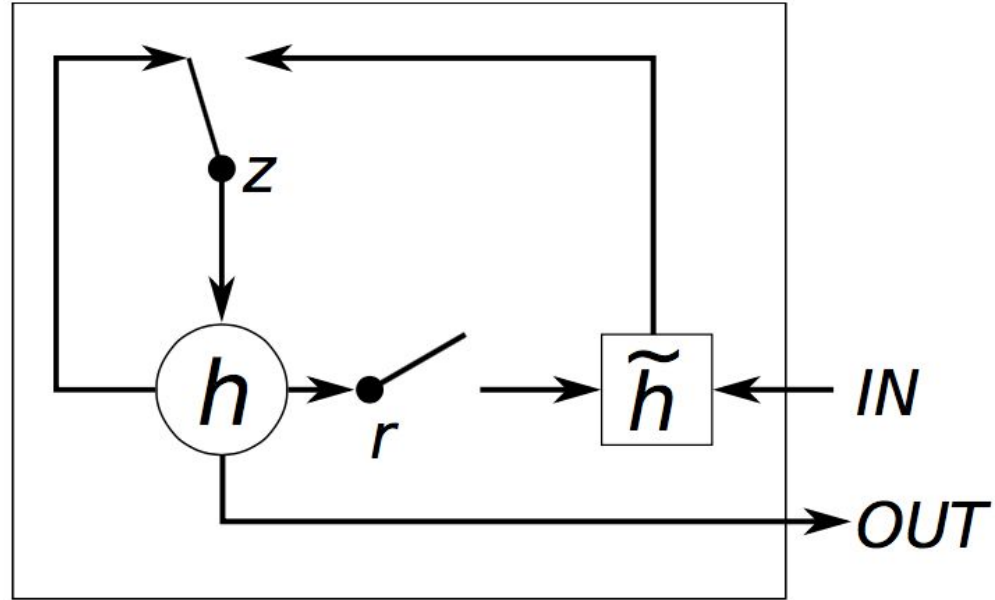


docker

---

4

# Gated Recurrent Unit (GRU)





# 4

## Word Embedding

### Word vectors

- Example:

